



USER GUIDE

Mechanical Keyboard

※ S100 Mechanical keyboard ※

Manufacturer: MATHEW TECHNOLOGY LIMITED

Execution standards: GB 4943.1-2022

Connection

2.4G Pairing:After the keyboard is turned on,Press Fn+R to enter 2.4G mode.at this time,the R flash slowly,Long press Fn+R for 3seconds to enter Pairing mode.the R flash quickly plug the receiver now.after pairing success,The R will stop flashing.

Bluetooth pairing:After the keyboard is turned on,Press Fn+Q/W/E to enter bluetooth mode.at this time,the Q/W/E flash slowly,Long press Fn+Q/W/E for 3seconds to enter Pairing mode.the Q/W/E flash quickly,open your computer bluetooth and searching,once keyboard show up,connect the keyboard.after pairing success,The Q/W/E will stop flashing.

Wired connection:turn off the keyboard and plug type-c cable.

Guarantee Card

Customer Information

User's Name:	Tel. No. :
E-mail:	
Model No. of Purchase:	
Date of Purchase:	

Keyboard Features



Ergonomic Design



N-Key Rollover

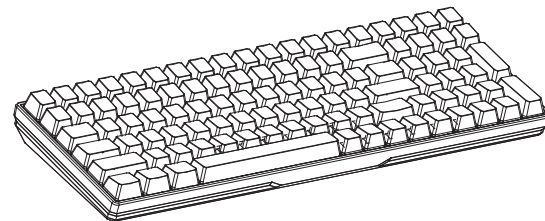
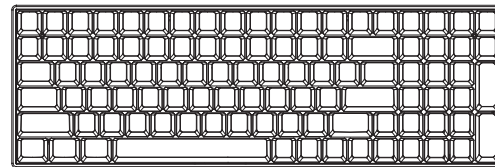


Detachable
Type-C Cable



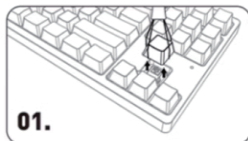
Cool Lighting

Product Diagram



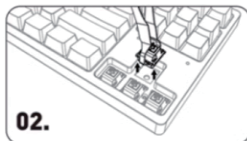
Note: Product due to different production batches of key position or function will be slightly changed, subject to the actual product. The factory specifications of the product are semi-finished products without key caps, customizable DIY mechanical keyboard

DIY replacement keyboard switch



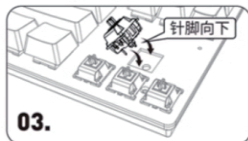
01.

Remove the key cap with a key puller



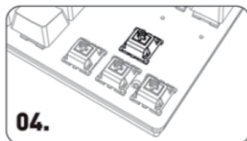
02.

Use a shaft puller to pull out the shaft body



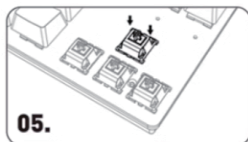
03.

Check the installation position of the shaft



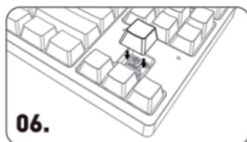
04.

Place the new shaft on the card position



05.

Gently press the light shaft stop position



06.

Just install the keycap

Multimedia Keys

Fn Combination Keys

+ F1	My computer	+ ESC	Long press for 3s to restore factory settings
+ F2	Homepage	+ A	Switch to Windows system
+ F3	E-mail	+ S	Switch to macOS system
+ F4	Calculator	+ Q	Short press to switch to BT1; Long press to pair with BT1
+ F5	Media player	+ W	Short press to switch to BT2; Long press to pair with BT2
+ F6	Stop	+ E	Short press to switch to BT3; Long press to pair with BT3
+ F7	Last song	+ R	Short press to switch to 2.4G; Long press to pair with 2.4G
+ F8	Play/Pause	+ T	Select wired mode
+ F9	Next song	+ WIN	Lock Win
+ F10	Mute	+ Backspace	Query battery status
+ F11	Volume -	+ ↑	Backlight luminance +
+ F12	Volume +	+ ↓	Backlight luminance -
+ Enter	Turn on/off Backlight	+ ←	Backlight circulation speed+
+ PS	Switch Backlight effect	+ →	Backlight circulation speed-

Keyboard Specification

Connection Method:	Wired	Number of Keys:	100
Interface Type:	Wired/BT/2.4G	Working Current:	≤170mA
Working Voltage:	DC 5V±5%	Cable Length:	1.5m±3cm

Product Instruction

1. This product is a tri-mode custom mechanical keyboard. It supports wireless connection and USB A to C wired connection.
2. The product supports Vista/Win ME/Win2000/WinXP/Win7/Win8/Win10/Win11/Android/Linux/Mac and other operating systems.

Caution

- ★ If this device does not work properly, please check if the USB port of the computer works rightly, and if the cable is broken.
- ★ Avoid using this device in a strong sunlight, high temperature or dusty environment.
- ★ Avoid using this device in a water ingress or humid environment.